



Usage

The M12DCe has sensors to monitor the temperature in the chamber and the environment.



FOB

It will maintain its temperature from 2-8°C overnight in the desert on battery and continuously on power at 45°C



Baskets

Holds 10~12 250ml or 4~6 450ml blood bags in the internal basket

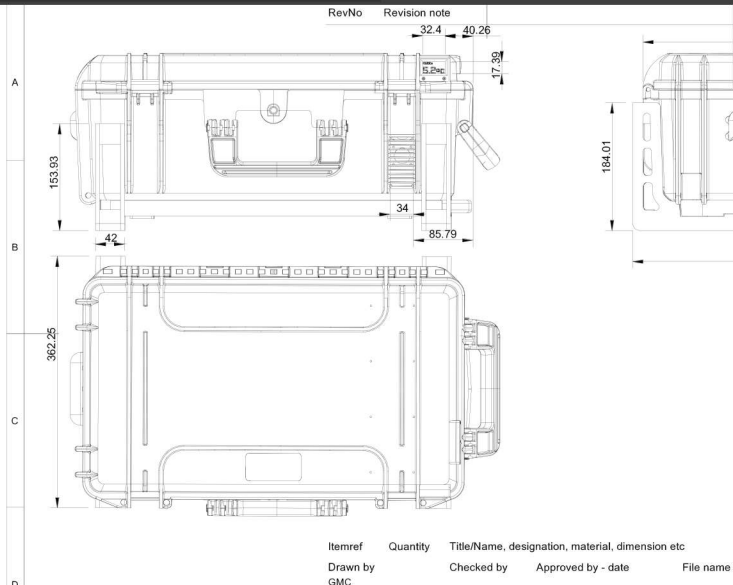
M12DCe Tactical CoolBOX

The M12DCe CoolBOX is a rugged portable fridge for extending the cold chain as far forward as possible. It has one 7l capacity cooled chamber designed with a compressor and heat exchanger. It has a main battery pack with the option to add another one to extend the cooling duration. It has one removable basket and can hold 4~6 450ml or 10~12 250ml blood bags. It can be charged from 12-28v on a vehicle or 240V mains power.

FEATURES

- ✓ Stream Visi software
- ✓ Programmable menu
- ✓ Slot for SD card
- ✓ Has audio alarm

M12DCe CoolBOX

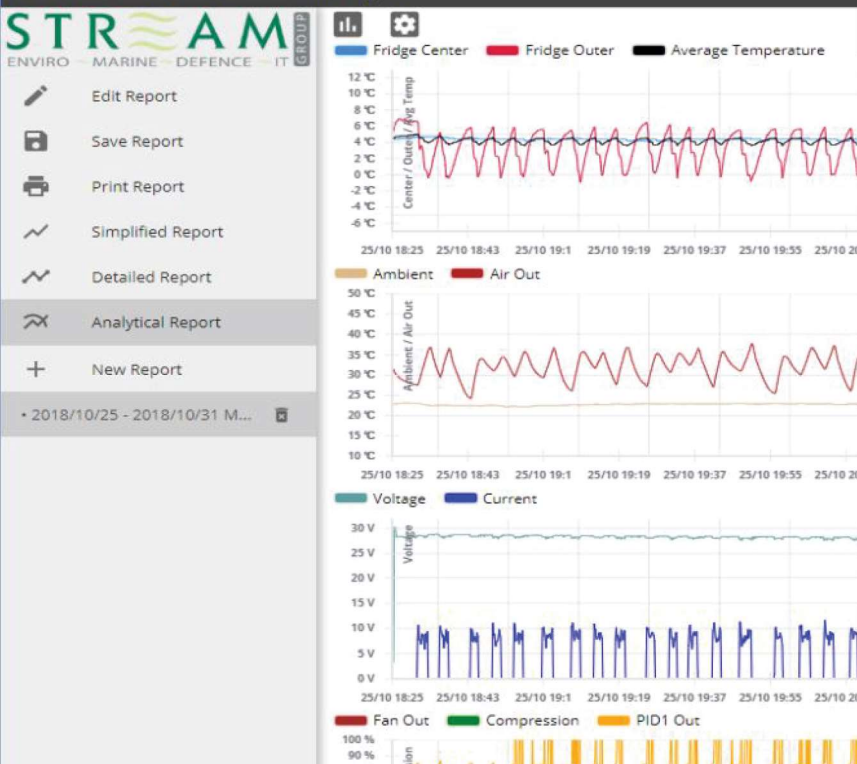


Weight	19	kg
Dimensions	590mm	L
	362mm	W
	234mm	D
Power	12-28v	DC
Cooling	2-10°C	<42°C amb
Capacity	7	litres

M12DCe

The M12 is Stream Defence's original tactical CoolBOX designed for special forces units.

Stream Visi - M12DCe/M4Dce/M16DCe Report Viewer



VISI (PC/Android software)

REPORTING

Visi makes it very simple to produce PDF reports from the onboard data logger, or drill down into the data to find anomalies.

It is as simple as this: import the file from the SD card, set your reporting info (once only, per user), add any notes required, and print.

Visi allows you to combine multiple data files to a single report, and present the data in simple form or with all parameters displayed.

User Interface

Display

The M12DCe has a clear display and joystick interface enabling the user to scroll through the menus and see instantly on the screen how the unit works and all the available variables. The SD card data logger records temperatures and environmental parameters for reporting.

